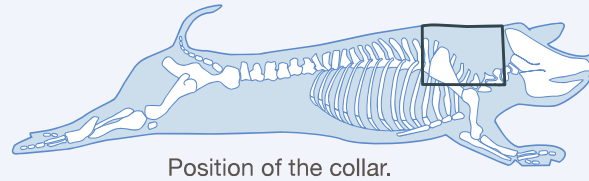


Presa Steak (Denver Steak)



Code: 3072



1 Pork Collar – bone-in.



2 Remove the bones by sheet boning taking care not to cut into underlying muscles.



3 Boneless collar of pork.



4 Starting with the remaining piece of the loin eye muscle, follow the natural seam to remove ...



5 ... the muscle which lies on top of the Presa (Denver Muscle) ...



6 ... continue and separate the two muscles.

Presa Steak (Denver Steak) (continued)

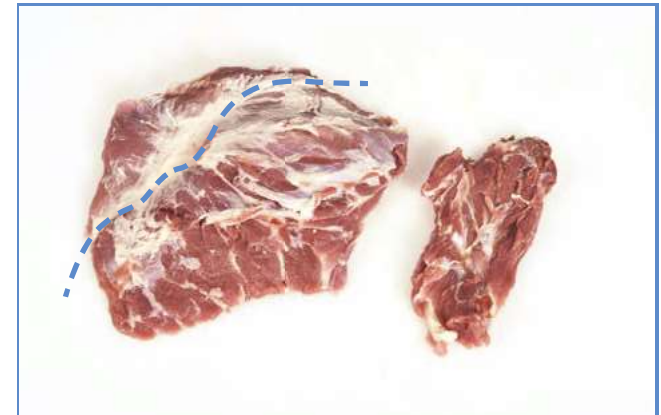
Code: 3072



7 Presa - Denver Muscle (A).



8 Remove the chain muscle ...



9 ... and thin muscle by following the natural seam as illustrated by dotted line.



10 Fully trimmed Presa (Denver Muscle)



11 Cut muscle across the grain to create Presa Steak (Denver Steak).



12 Presa Steak (Denver Steak).